



## INSTALLATION INSTRUCTION MULTI-LAYER RIGID VINYL FLOORING WITH VALINGE 5G CLICK

### BEFORE THE INSTALLATION

#### CONDITIONING

Store your multi-layer rigid vinyl flooring in the same room as the installation for minimum of 48 hours prior to the installation. During this time, floorboards should remain in the carton and be laid horizontally on a flat surface. Room temperature should be maintained between 18° and 27°C (65° and 80°F) and humidity between 30-50%. It is also recommended to cut the carton on the short side to allow airflow inside the box.

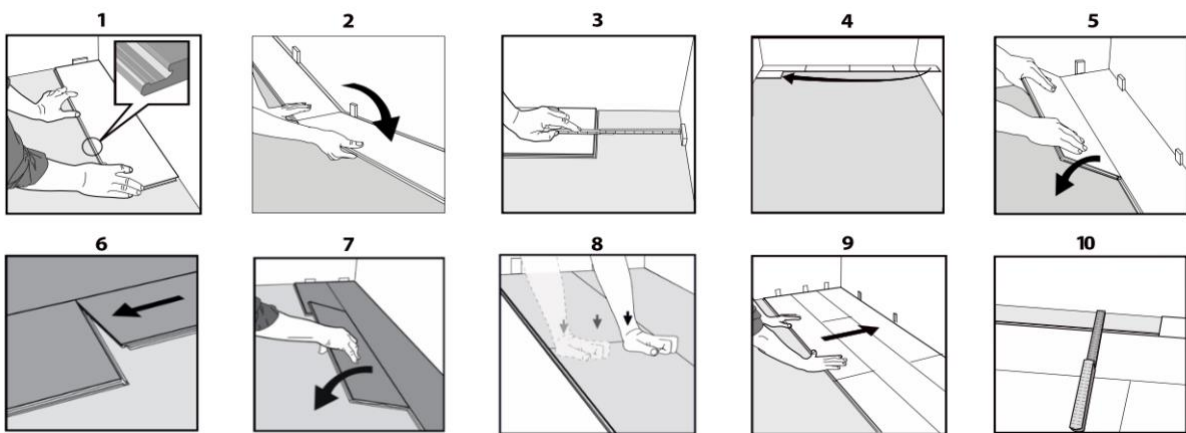
#### PREPARATION

- Make sure that the subfloor is smooth, flat, dry, clean and solid. Any adhesive residue or carpet staples should be removed prior to installation.
- Multi-layer rigid vinyl flooring can be installed directly on concrete (or anhydrite) subfloor and over most existing hard floor coverings providing they are smooth, flat, dry, clean and solid. Do not install over carpet or any other soft subfloors.
- Subfloors should be flat within a tolerance of 2 mm (1/16") over a span of 1 m (4 feet). Any unevenness over 2 mm (1/16") must be sanded down or levelled with a floor leveller. Voids or humps in the subfloor will prevent the planks from locking properly.
- Ceramic tiles should be made smooth by applying a cementitious overlay such as patching or levelling compound to smooth out grout joints.
- Although multi-layer rigid vinyl flooring is waterproof, it is not to be used as a moisture barrier. Your subfloor should be completely dry prior to installation of the multi-layer rigid vinyl flooring (<2,5% moisture degree for concrete subfloor, <0.5% for anhydrite). Moisture will not damage the product but it

might get into walls and structure of the home. It is also recommended to use vapour barrier film.

- The final responsibility for determining if the subfloor is well prepared and dry enough for installation of multi-layer rigid vinyl flooring lies with the floor covering installer. It is recommended to use certified flooring installers.
- The largest recommended installation area is 300 m<sup>2</sup> (3000 ft<sup>2</sup>). It is recommended to use 8 mm (5/16") expansion gap in the areas longer/wider than 20 m (65 feet) and in door openings, especially if there are temperature differences between areas.

## INSTALLATION



## GENERAL RULES

- When installing the multi-layer rigid vinyl flooring you must remember to leave a 6 mm (1/4") gap around the perimeter of the room. When first starting the installation, you can install against the wall and after 2-3 rows, adjust the distance from the wall by 6 mm (1/4") and insert spacers to maintain that gap. Begin installation and place the first floorboard in the left corner remembering to leave a gap of 6 mm (1/4") from the left wall.
- Take the second floorboard, align the long side to the wall, gently drop it and press the short side with your hand (or tap with a rubber mallet). Continue in the same manner until the row is completed. Cut the last floorboard accordingly and keep the distance to the wall at 6 mm (1/4").
- Start the second row with the leftover cut part of the last floorboard of the previous row. The starter piece should measure at least 30 cm (12"). If not, start with a new floorboard and cut it larger than the required 30 cm (12"). Please note that end joints should always be at least 30 cm (12") from each other from row to row.
- Place the long side of the floorboard at an angle against the floorboard in the previous row, press forward and fold down at the same time.

- Take the second floorboard, align the long side to the front row, gently drop it and press the short side with your hand (or tap with a rubber mallet). Complete the second row and the following rows in the same manner.
- After 2-3 rows adjust the distance to the front wall by placing spacers of 6 mm (1/4"). Keep the spacers in position during the entire time of installation and remove once the installation is completed.
- If the wall is uneven, the floorboards must be adapted to its contours. Mark the floorboards with the contour of the wall. Do not forget to leave 6 mm (1/4") of gap from the wall. This procedure shall be used also for the first row if necessary.

## IMPORTANT

- Multi-layer rigid vinyl flooring may be installed over water-based radiant-heated subfloors according to above mentioned instructions, provided the surface temperature of the system does not exceed 27°C (81°F). Due to the speed of sudden temperature changes, which has potential to negatively affect vinyl flooring construction, it is not recommended to install over electrical radiant heating systems.
- When installing in the bathroom, please use professional silicone caulking to fill the expansion space at the tub, shower and all wet areas to prevent surface water seepage under the floor.
- It is not recommended to install multi-layer rigid vinyl flooring in areas exposed to intense direct sunlight and temperature greater than 60°C (140°F).
- It is not recommended to place heavy, non-moving objects (weight over 750 kg or 1650 lbs, pressure over 30 kg/cm<sup>2</sup> or 425 psi at any point) directly on the multi-layer rigid vinyl flooring.
- Multi-layer rigid vinyl flooring with click should be installed as floating floor. It is not recommended to glue it down or attach it to the subfloor in any other way.
- If the installation is performed without taking into consideration above recommendations, product warranty might be voided.

## AFTER INSTALLATION

### CARE AND MAINTENANCE

In order to maintain your multi-layer rigid vinyl flooring in good condition:

- keep the temperature in the room between 18° and 27°C (65° and 80°F)
- sweep or vacuum daily using soft bristle attachments
- clean up spills and excessive liquids immediately
- damp mop as needed and use cleaners recommended for no-wax vinyl floors

- protect floor from constant direct sunlight
- use proper floor protection devices such as felt protectors under furniture and a mat at entrance ways
- make sure pets have nails clipped regularly
- do not use abrasive cleaners, bleach or wax to maintain the floor
- do not drag or slide heavy objects across the floor

For more information, please contact [dok.epuflooring@epufloor.com](mailto:dok.epuflooring@epufloor.com).

